

# GRILLODUR®- FACADES



## Fibreglass walls that create space

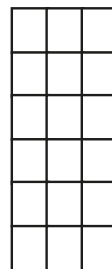


### GRILLODUR®-facades

- ↪ elements available in lengths up to 10 m
- ↪ U-value of the glazing 0,9W/m²K
- ↪ total energy transmission up to 21 %
- ↪ all insert elements can be integrated
- ↪ ball-impact safety tested in accordance with DIN 18032-3 (including hockey balls)
- ↪ highest chemical resistance
- ↪ optimal room illumination
- ↪ sound insulation Rw up to 36 dB
- ↪ free choice of colour

The GRILLODUR®-facade is a useful alternative to constructions with glass. The facade daylight system is used in all situations where large and light weight illuminated areas are required for the structure, to realize a room illumination with glare-free daylight.

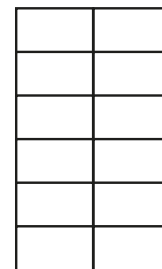
### Grate variants



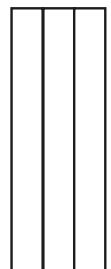
square-Q



square-V



square-H



standard

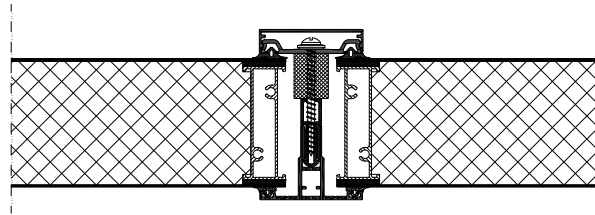
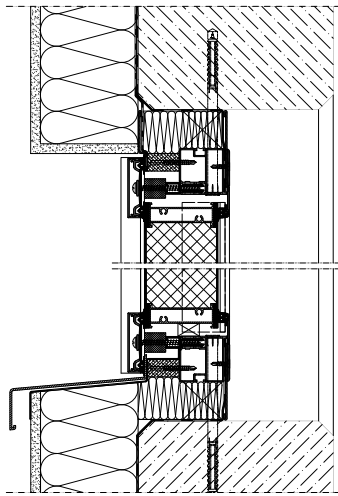
The various superstructural parts allow the planner an aesthetic freedom for integration of the facade daylight system in the structure. Window and door profiles in all ways of delivery, that are adapted for the system measurements of the basic construction, belong to the product range.



## TECHNICAL DATA GRILLODUR®-FACADE DAYLIGHT SYSTEMS

width of element	up to 2.000 mm
thickness of element	≥ 70 mm
height of element	up to 10.000 mm
profile design	closed or open profiles

BASIS: building height up to 10 m  
wind load 0,5 kN/m<sup>2</sup>



The separate elements are prefabricated with aluminium profiles in a distance of 300 mm to a maximum element width of 2000 mm. By the use of a two-part t-connector the separate elements are connected to a holistic facade. Depending on the static requirements aluminium/steel rectangular tubes are integrated inside or outside to realize a bracing force-fit. The results are profile visible widths of 60 mm.



exterior facade of a sports hall in Nauen

**PLEASE CONTACT:**  
JET Tageslicht & RWA GmbH · Weidehorst 28 · D-32609 Hüllhorst  
Tel. +49 (0) 57 44 / 503-0 · Fax +49 (0) 57 44 / 503-40



•ISO 9001 •BS OHSAS 18001  
•installer SHEVS  
•approved products

**LIGHT & AIR.  
WITH SAFETY.**