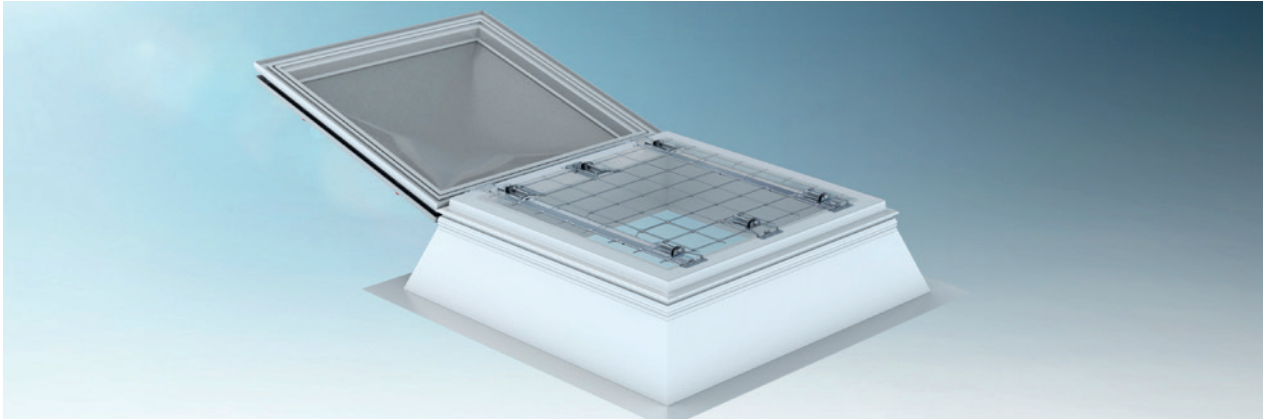


# JET dome rooflight fall-through protection type jet LK-DDN

**VELUX®**
**Commercial**


Innovative. Flexible. Reliable:

The retrofittable manufacturer-neutral fall-through protection for improved safety

**NEW** The individual concept including unique stability testing

## JET LK-DDN

- Permanent and effective 'Dynamic fall-through protection' for roof openings (e.g. with dome rooflight up to a maximum nominal width of 2 x 3 m)
- JET fall-through protection, tested and approved in accordance with GS-BAU-18:2015-02 with DGUV test certificate
- energy consuming design to reduce the impact energy (protecting people and structure) and for improving the appearance
- unique connection technology for stability testing of the upstand

### Advantages:

- individual use in existing structures (retrofitting)
- retrofitting possible regardless of upstand type and manufacturer\*
- extensive testing
- fast and simple installation
- no interruptions to operation
- permanent and collective effective safety for the roof area
- minimal influence on daylight yield and smoke exhaust technical coordination regarding the reduction of  $A_a$ -values is necessary
- high light permeability
- JET LK-DDN installation and SHEV handling from one source

### Note:

\*as long as there are no structural limitations regarding function and suitability of use

### Challenges:

- no or insufficient, implementation of valid German standards and regulations (e.g. BauStellV, DIN 4426:2017-01, ASR A2.1, DGUV Regulation 38 and Information 201-054)
- safety components are missing, cannot be utilised safely or require a complex, supplementary rescue concept
- building stock has been expanding continuously and contains different SHEV dome rooflight systems

### Risks:

- latent, partially high potential danger during maintenance, repair and other works on the flat roof
- substantial liability risk for the operator because of missing traffic safety

### Our approach:

- use of the JET LK-DDS system for protecting against fall through

### Our safety concept:

- 'dynamic fall-through protection net' for permanent and collective dome rooflight safety
- individual adjustment to suit structural conditions
- direct securing via special bracket
- quick, safe installation from the roof (minimum limitations for ongoing operation)
- optional monitoring for utilisation capability (e.g. visual inspection regarding damage or corrosion and/or controlling the substructure)

1.1.1  
JET TOP-90

1.1.2  
JET TOP-90 PLUS

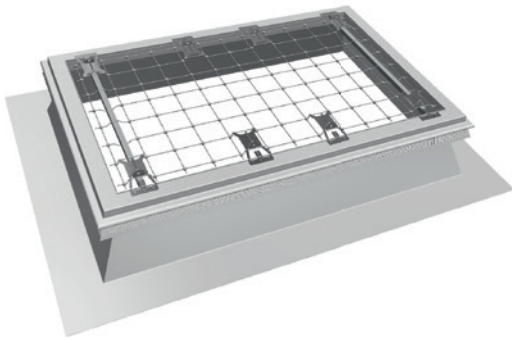
1.2.1  
JET dome rooflight upstands and  
JET roof connection systems

## The retrofittable JET LK-DDN fall-through protection system

- a specially designed fall-through protection system for the permanent and collective safety for roof openings
- tested and approved in accordance with GS-BAU-18 and used to prevent falling through
- can be installed quickly without penetrating the roof membrane
- connection technology can test the stability of the substructure
- designed for the individual need in existing structures because of the high independence level concerning manufacturer and nominal size of the dome rooflight upstand
- designed for especially high availability
- special logistics concept for rapid delivery to where safety is imperative



*JET LK-DDN, installed on a GRP upstand with dome rooflight, ventable*



*JET LK-DDN for fixed dome rooflight*



*JET LK-DDN for SHEV dome rooflight*

### Five steps to the best fall-through protection

