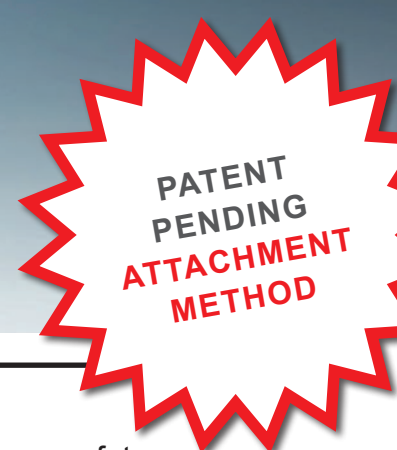
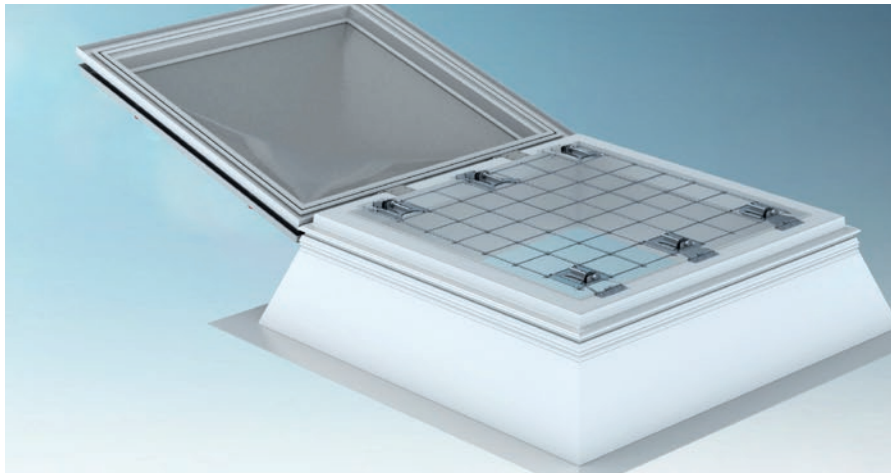




# JET LIGHT DOME FALL-THROUGH PROTECTION TYPE JET-LK-DDN



## Innovative. Flexible. Process-reliable:

The retrofit capable manufacturer-neutral fall-through protection for more safety

**NEW** The individual concept including unique stability testing



### The product at a glance:

- Permanently and collectively effective “Dynamic fall-through protection” for roof openings (e.g. with light domes up to a maximum nominal width of 2 x 3 m)
- JET-fall through protection, tested and approved in accordance with GS-BAU 18:2015-02 (DGVV Test Certificate: being prepared) [German Employers Liability Insurance]
- Energy consuming design to reduce the impact energy (protecting people and structure) and for improving the appearance
- Unique and patent pending connection technology for stability testing of the upstand

### Advantages:

- Individual use in existing structures (retrofitting)
- Retrofitting possible regardless of upstand type and manufacturer \*)
- Extensive testing
- Fast and simple installation
- No interruptions to operation
- Permanent and collective effective safety for the roof area
- Minimal influence on daylight yield and smoke exhaust
- High light permeability
- JET-LK-DDN installation and SHEV handling from one source

### Note:

\*) Insofar as no limitations are stated by the design with regard to function and capability for utilisation

### The problem:

- No, or only insufficient, implementation of valid German standards and regulations (e.g. BauStellV, DIN 4426:2017-01, ASR A2.1, DGVV Regulation 38 and Information 201-054)
- Safety components are missing, cannot be utilised safely or require a complex, supplementary rescue concept
- Building stock has been expanding continuously and contains e.g. different SHEV light dome systems

### The risk:

- Latent, partially high potential danger during maintenance, repair and other works on the flat roof
- Substantial liability risk for the building operator because of missing safety on the roof

### Our approach:

- Utilisation of the JET-LK-DDS system for securing against fall through

### Our safety concept:

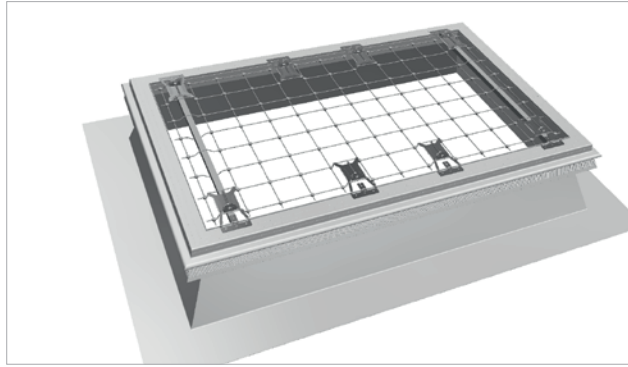
- “Dynamic fall-through protection net” for permanent and collective light dome safety
- Individual adjustment to suit structural conditions
- Direct securing via special bracket
- Quick, safe installation from on the roof (minimum limitations for ongoing operation)
- Optional monitoring for utilisation capability (e.g. visual inspection regarding damage or corrosion and/or controlling the substructure)



1.1.1	1.1.2	1.2.1
JET-TOP 90	JET-TOP 90 PLUS	JET-Light dome upstands and JET-Roof connection systems



JET-LK-DDN, installed on a GRP upstand with light dome, ventable



JET-LK-DDN for fixed light dome

### The retrofit capable JET-LK-DDN fall-through protection system

- Is a specially designed fall-through protection system for the permanent and collective safety for roof openings
- Has been tested and approved in accordance with GS-Bau 18 and is utilised to prevent falling through
- Can be installed quickly without penetrating the roof membrane
- Connection technology contains testing of the substructure with regard to the necessary stability
- Has been designed for the individual need in existing buildings because of the high independence level concerning manufacturer and nominal dimension of the light dome upstand
- Is designed for especially high availability
- Special logistics concept for rapid delivery to where safety is imperative



JET-LK-DDN for SHEV light dome

## FIVE STEPS TO THE BEST FALL-THROUGH PROTECTION



Additional information can be obtained from the website: [lk-ddn.jet-group.com](http://lk-ddn.jet-group.com)

**PLEASE CONTACT:**  
**JET Tageslicht & RWA GmbH** · Weidehorst 28 · D-32609 Hüllhorst  
 Tel. +49 (0) 57 44 / 503-0 · Fax +49 (0) 57 44 / 503-40



**LIGHT & AIR.  
 WITH SAFETY.**